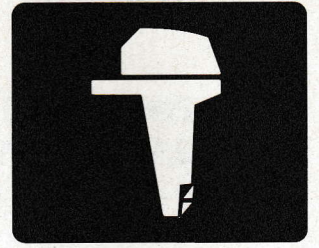




**YAMAHA**



**F13.5B**

**F15C**

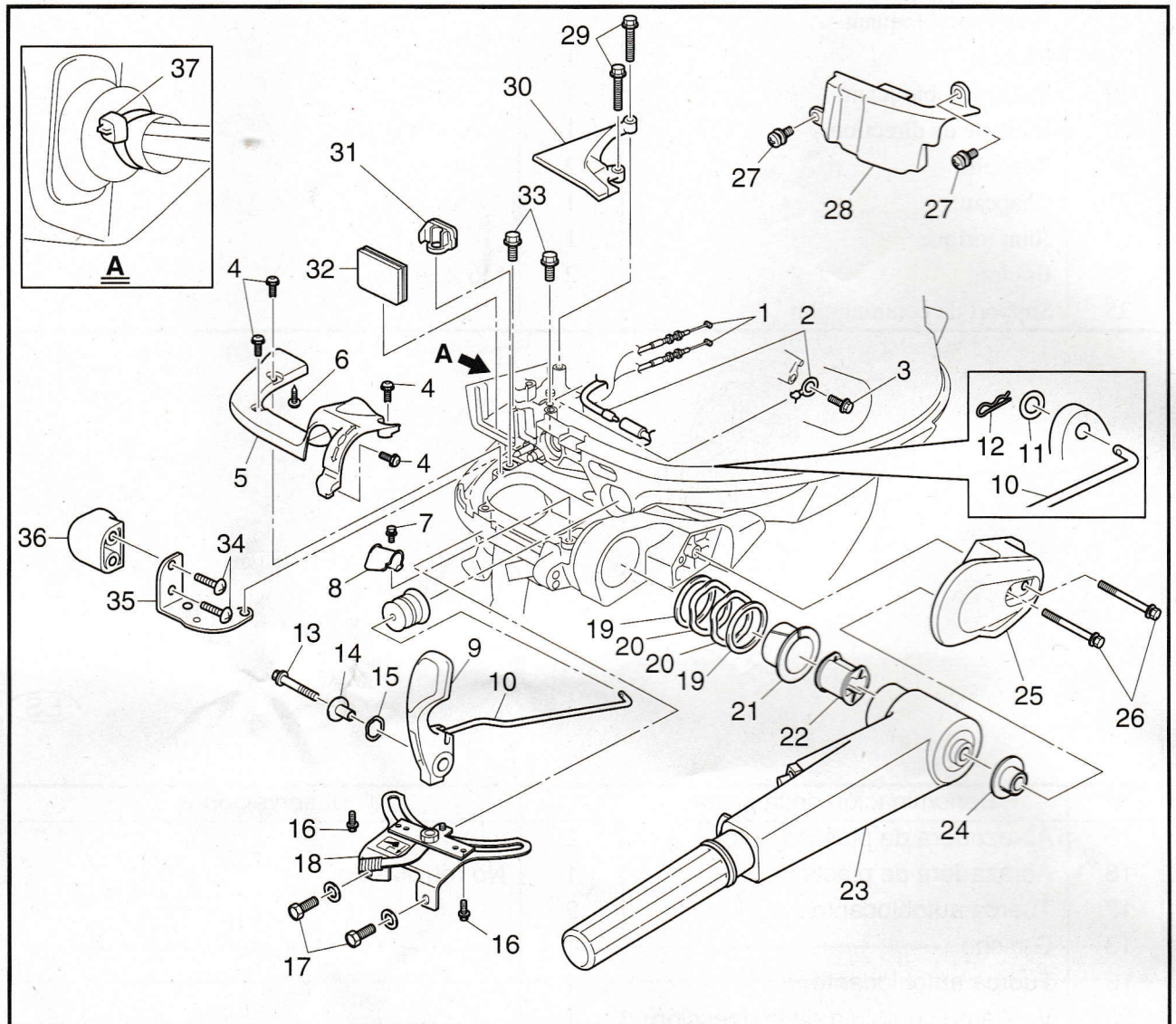
**F20B**

REMOTE CONTROL ATTACHMENT KIT (E)  
INSTALLATION MANUAL  
MANUEL D'INSTALLATION DU KIT DE MISE EN PLACE (F)  
DE COMMANDE A DISTANCE  
MANUAL DE INSTALACION DEL JUEGO ACCESORIO (ES)  
DE CONTROL REMOTO

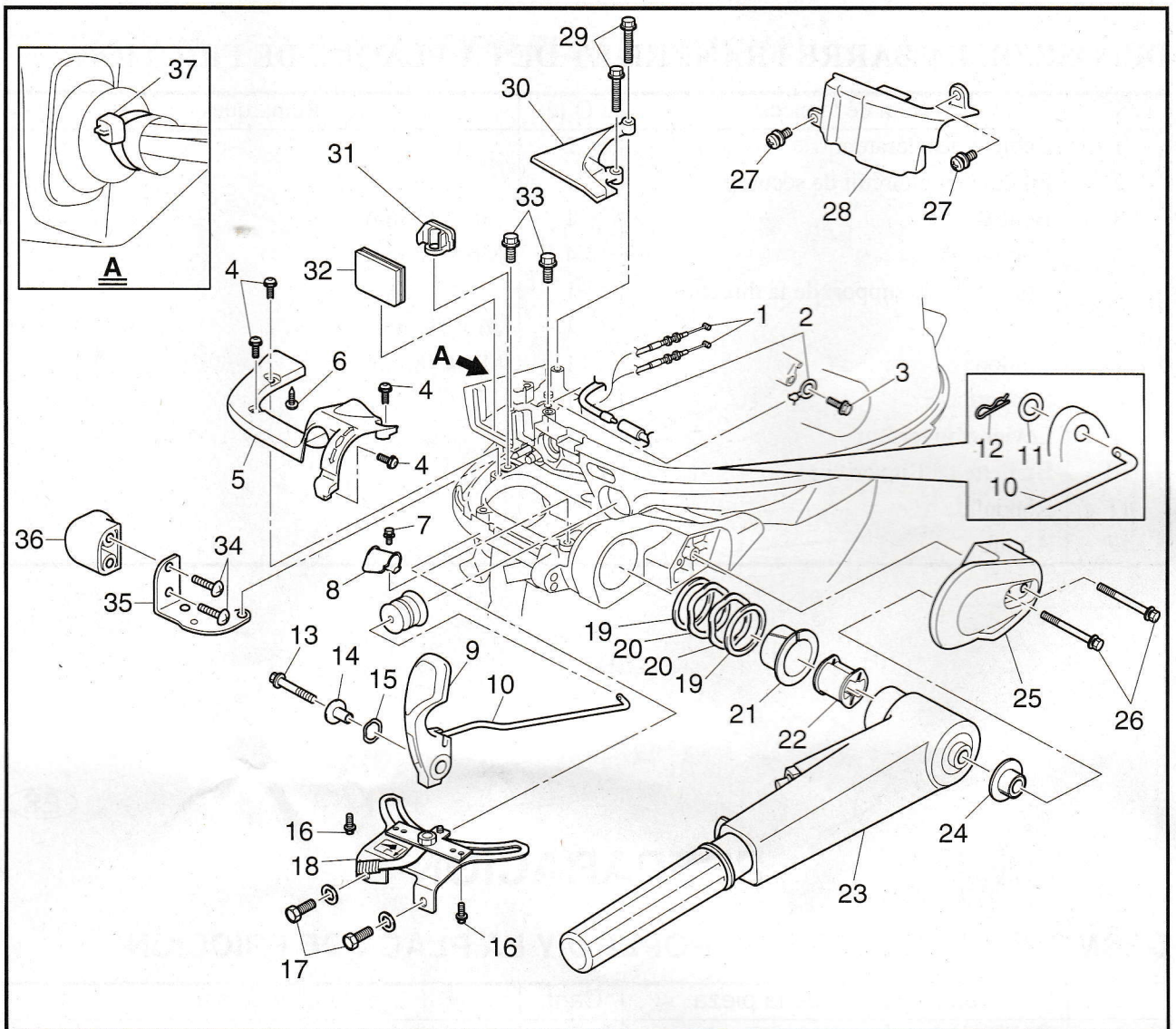
**6AF-2819K-90**

# PREPARATION

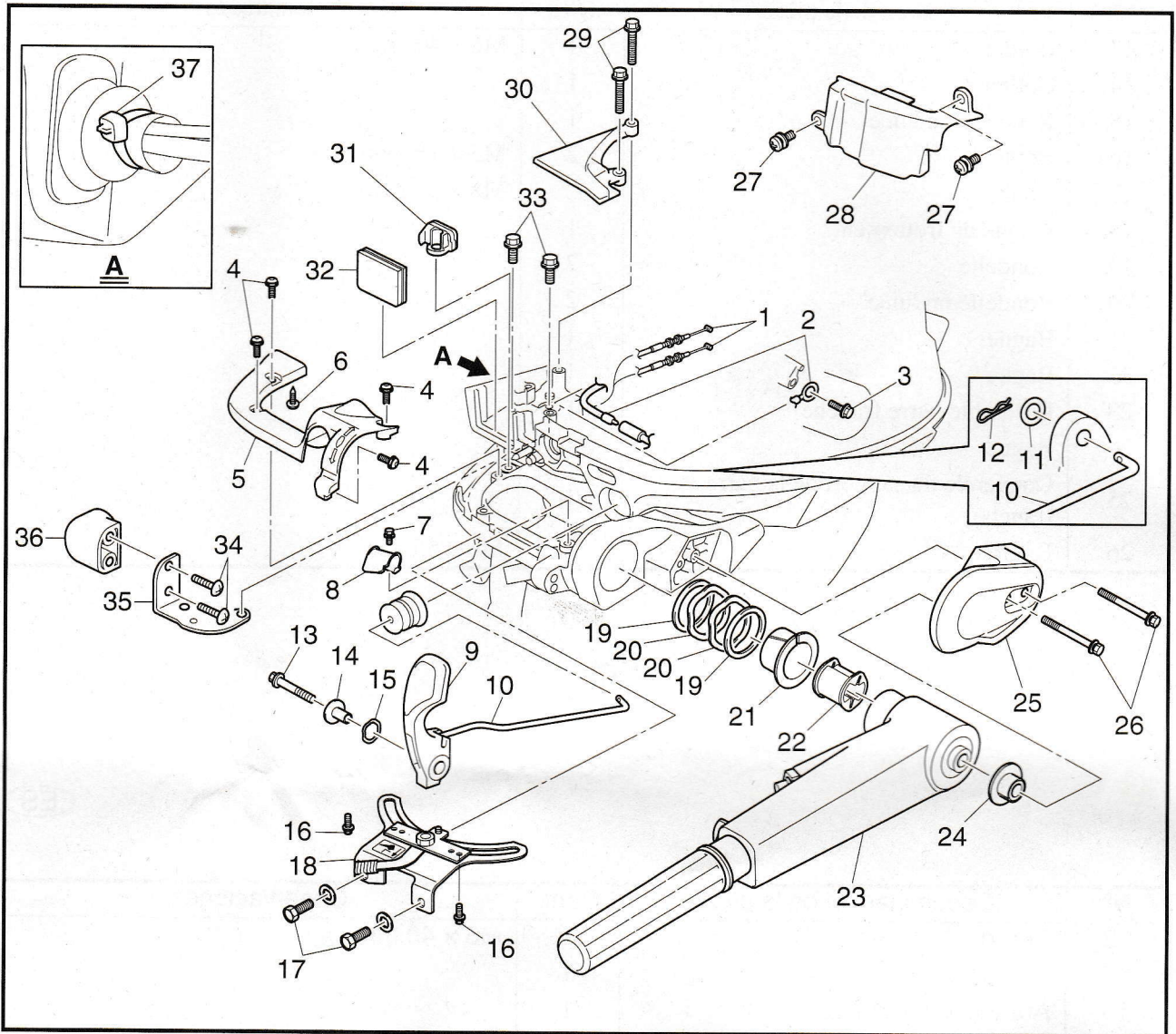
## TILLER HANDLE AND FRICTION PLATE REMOVAL



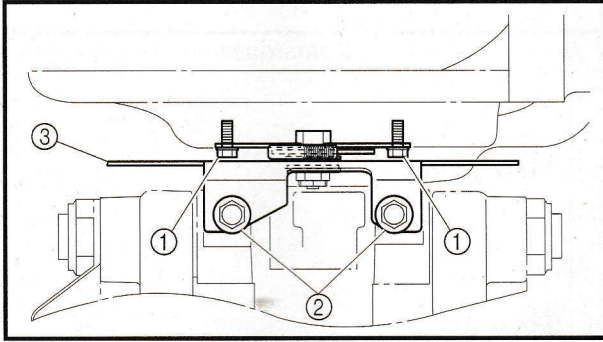
No.	Part name	Q'ty	Remarks
1	Throttle cable	2	
2	Engine shut-off switch lead	1	
3	Bolt	1	M6 × 15 mm
4	Bolt	4	M6 × 18 mm
5	Steering bracket cover	1	
6	Screw	1	ø6 × 19 mm
7	Bolt	1	M6 × 18 mm
8	Holder	1	
9	Shift lever	1	
10	Shift link rod	1	
11	Washer	1	
12	Clip	1	



No.	Part name	Q'ty	Remarks
13	Bolt	1	M6 × 40 mm
14	Collar	1	
15	Wave washer	1	
16	Bolt	2	M5 × 18 mm
17	Bolt	2	M8 × 22 mm
18	Friction plate	1	
19	Washer	2	
20	Wave washer	2	
21	Bushing	1	
22	Grommet	1	
23	Tiller handle assembly	1	
24	Bushing	1	
25	Tiller handle bracket cover	1	
26	Bolt	2	M6 × 55 mm



No.	Part name	Q'ty	Remarks
27	Screw	2	
28	Cover	1	
29	Bolt	2	M6 × 30 mm
30	Retaining plate	1	
31	Grommet	1	
32	Grommet	1	
33	Bolt	2	M6 × 10 mm
34	Screw	2	ø6 × 20 mm
35	Bracket	1	
36	Adapter	1	
37	Plastic tie	1	Not reusable

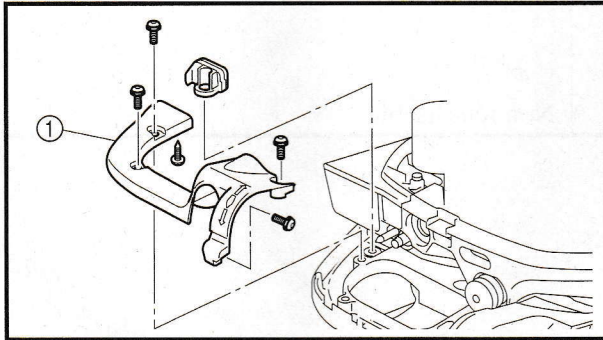


### FRICITION PLATE REMOVAL

1. Remove:
  - Bolts ① and ②
  - Friction plate assembly ③

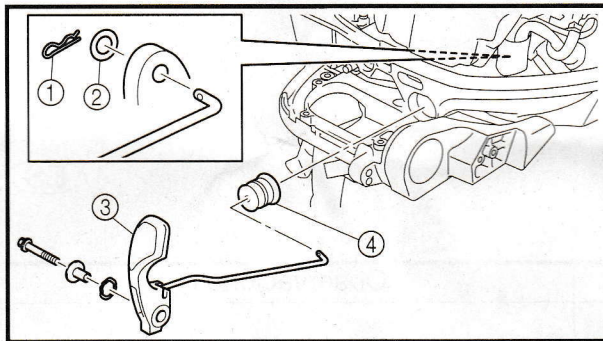
**TIP:**

Before removing the bolts ①, turn the out-board motor completely to port or starboard.

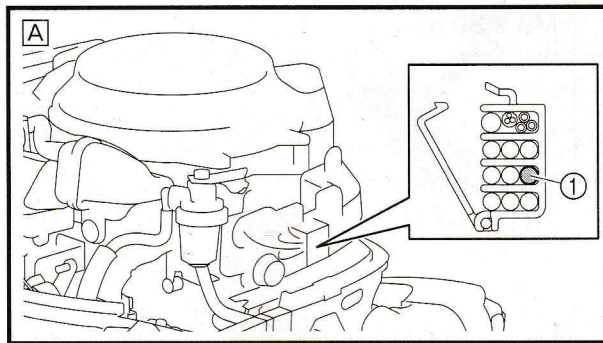


### TILLER HANDLE REMOVAL

1. Remove:
  - Steering bracket cover ①



2. Remove:
  - Clip ①
  - Washer ②
  - Shift lever ③
  - Grommet ④



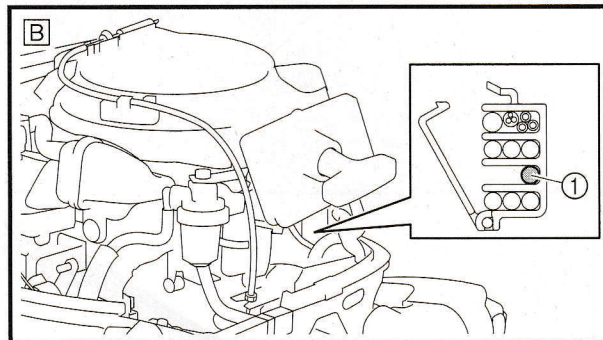
3. Remove:
  - Engine shut-off switch lead ①

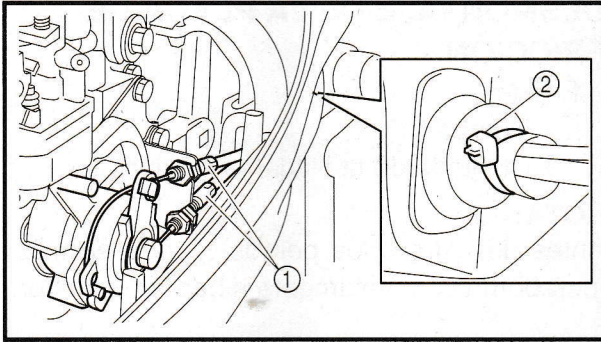
**TIP:**

Disconnect the engine shut-off switch connector (white lead) and remove it from the holders.

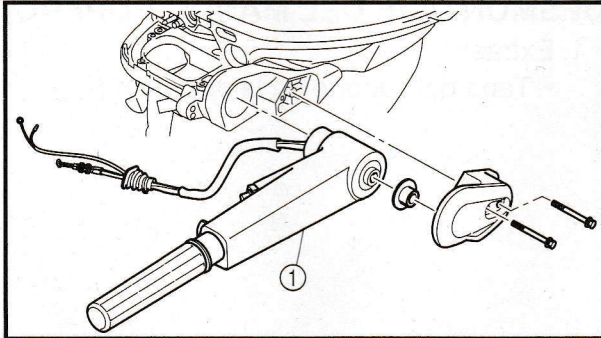
**A** Electric starter model

**B** Manual starter model

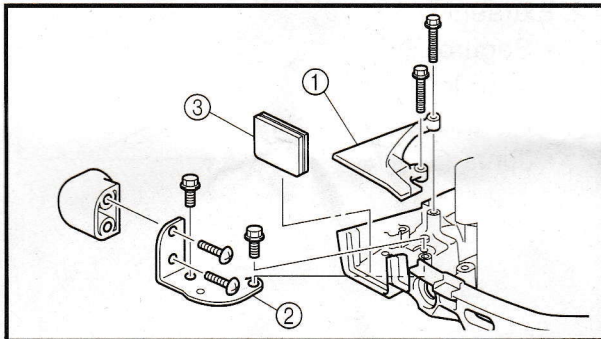




4. Remove:
- Throttle cables ①
  - Plastic tie (not reusable) ②



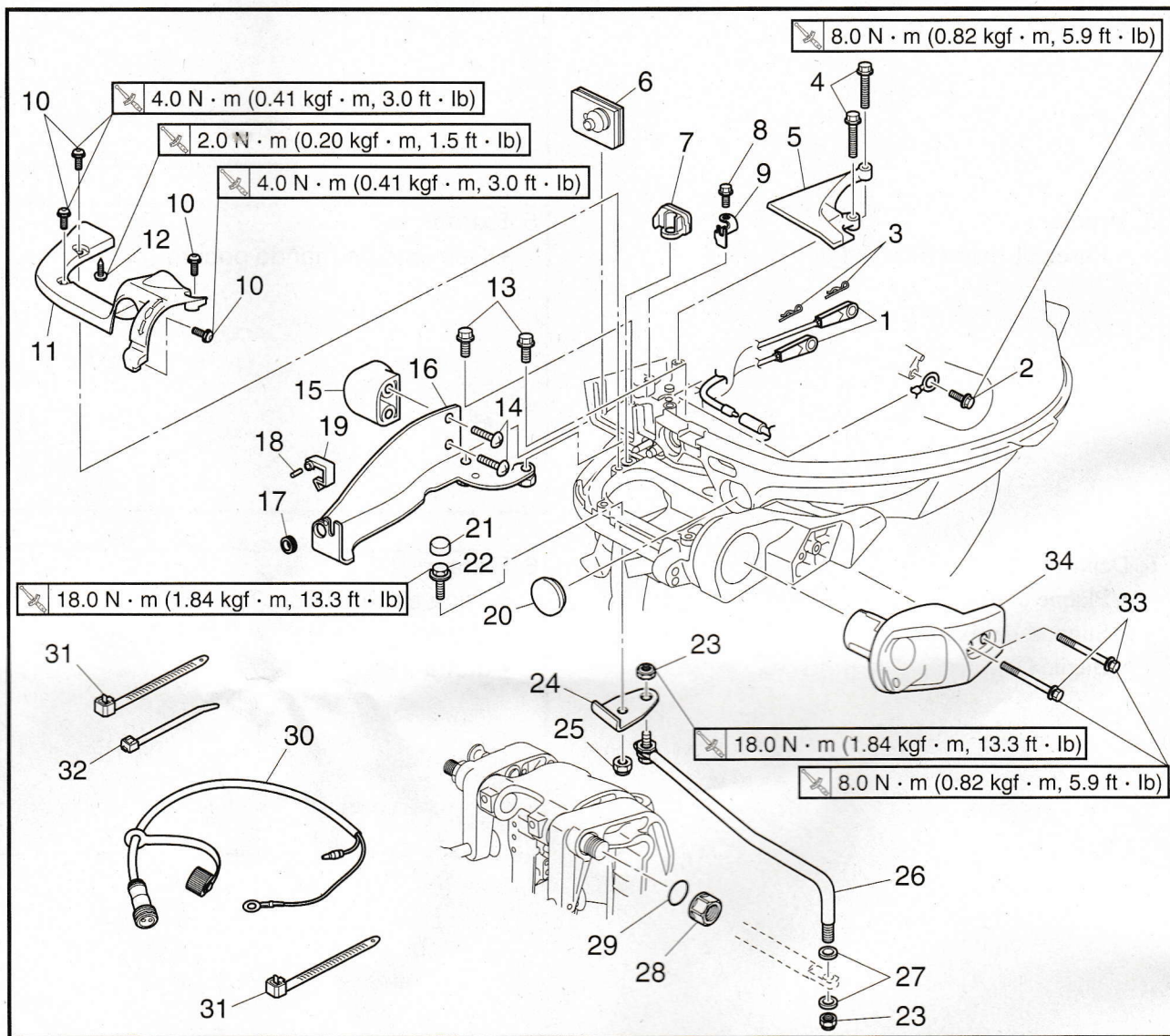
5. Remove:
- Tiller handle assembly ①



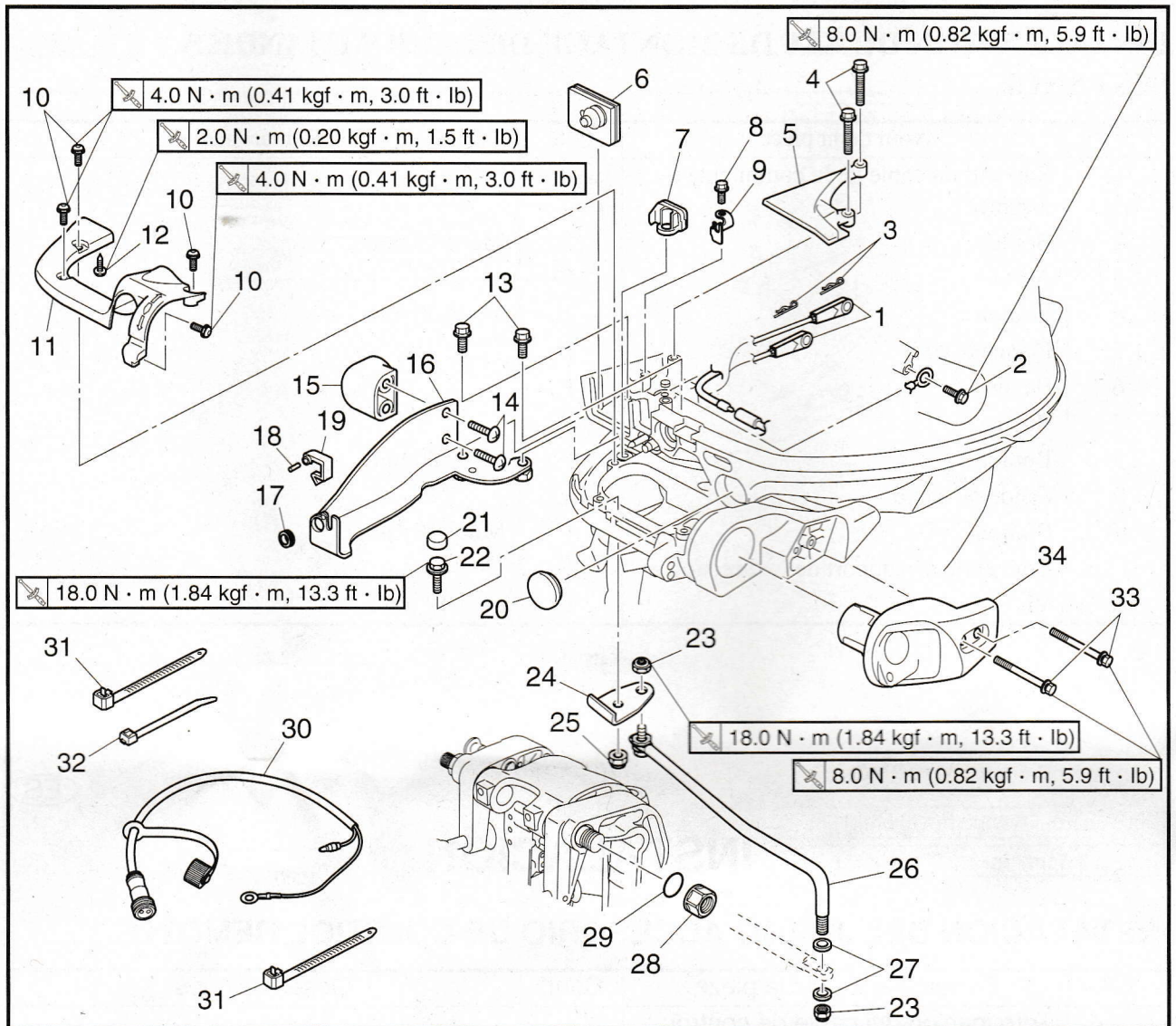
6. Remove:
- Retaining plate ①
  - Bracket ②
  - Grommet ③

# INSTALLATION

## REMOTE CONTROL ATTACHMENT KIT INSTALLATION

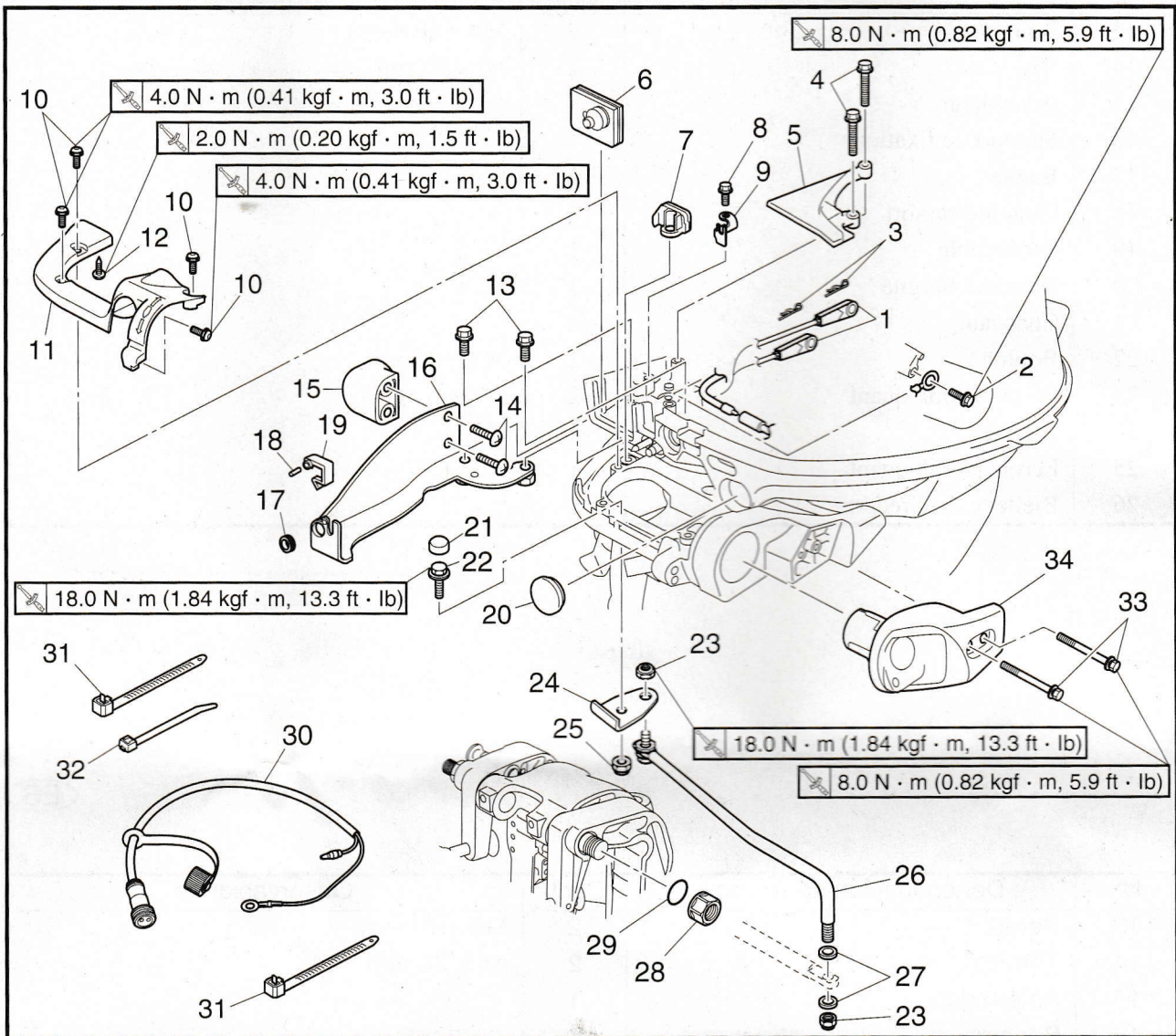


No.	Part name	Q'ty	Remarks
1	Remote control cable joint	2	
2	Bolt	1	M6 × 15 mm
3	Clip	2	
4	Bolt	2	M6 × 30 mm
5	Retaining plate	1	
6	Grommet	1	
7	Grommet	1	
8	Bolt	1	M6 × 20 mm
9	Cable guide	1	
10	Bolt	4	M6 × 18 mm
11	Steering bracket cover	1	
12	Screw	1	ø6 × 19 mm

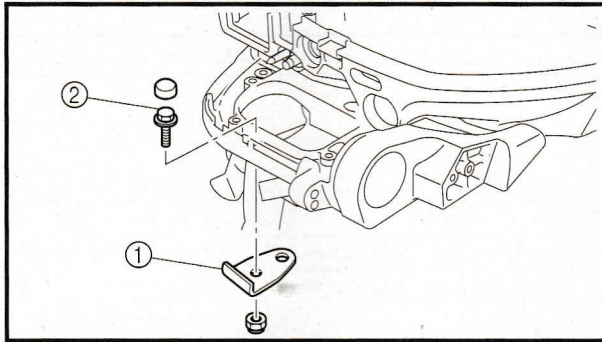


No.	Part name	Q'ty	Remarks
13	Bolt	2	M6 × 10 mm
14	Screw	2	∅6 × 20 mm
15	Adapter	1	
16	Bracket	1	
17	Grommet	1	
18	Spring pin	1	
19	Cable clamp	1	
20	Blind plug	1	
21	Cap	1	
22	Bolt	1	M8 × 25 mm
23	Self-locking nut	2	
24	Hook	1	
25	Self-locking nut	1	
26	Steering link rod	1	





No.	Part name	Q'ty	Remarks
27	Washer	2	
28	Cap	1	
29	O-ring	1	
30	Socket cord assembly	1	
31	Plastic tie	2	
32	Plastic tie	1	Not reusable
33	Bolt	2	M6 × 30 mm
34	Switch bracket	1	



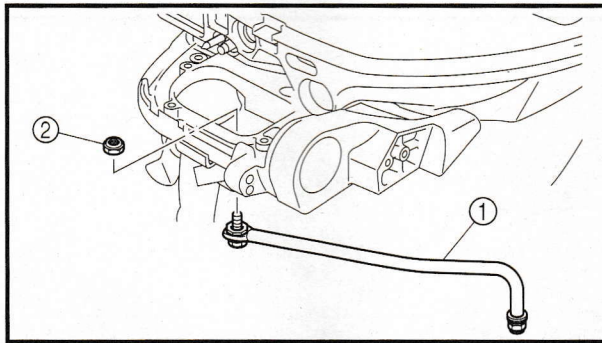
## REMOTE CONTROL ATTACHMENT KIT INSTALLATION

### 1. Install:

- Hook ①
- Bolt ②



**Bolt:**  
18.0 N • m  
(1.84 kgf • m, 13.3 ft • lb)

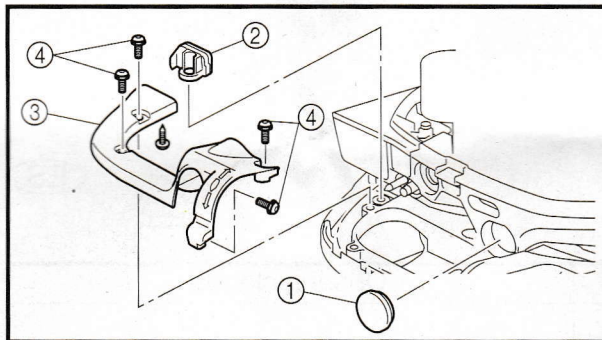


### 2. Install:

- Steering link rod ①
- Nut ②



**Nut:**  
18.0 N • m  
(1.84 kgf • m, 13.3 ft • lb)

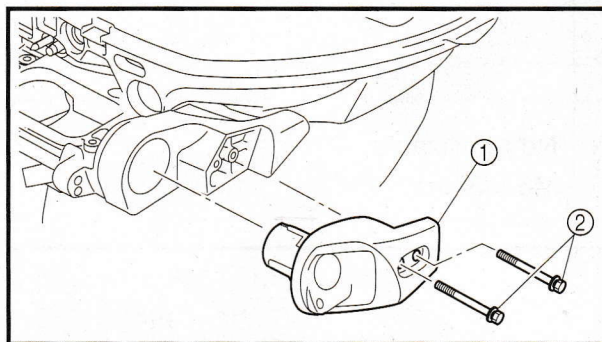


### 3. Install:

- Grommet ①
- Grommet ②
- Steering bracket cover ③
- Bolt ④



**Bolt:**  
4.0 N • m (0.41 kgf • m, 3.0 ft • lb)

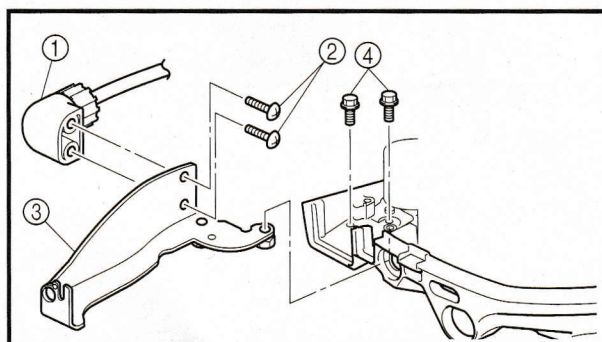


### 4. Install:

- Switch bracket ①
- Bolt ②



**Bolt:**  
8.0 N • m (0.82 kgf • m, 5.9 ft • lb)

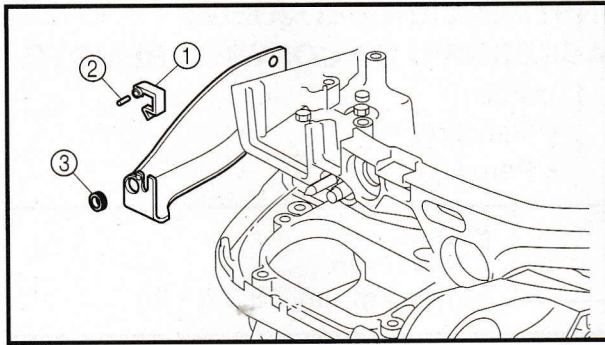


### 5. Install:

- Adapter ①
- Screw ②
- Bracket ③
- Bolt ④

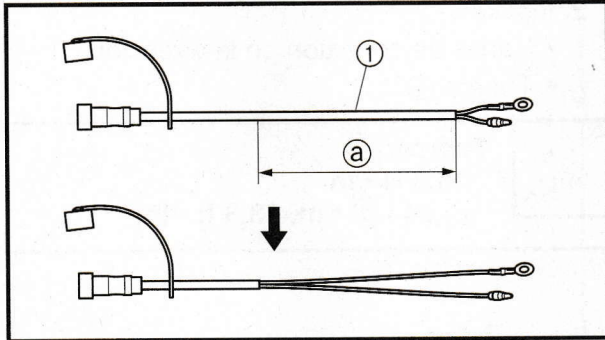


**Bolt:**  
2.0 N • m (0.20 kgf • m, 1.5 ft • lb)



6. Install:

- Cable clamp ①
- Pin spring ②
- Grommet ③

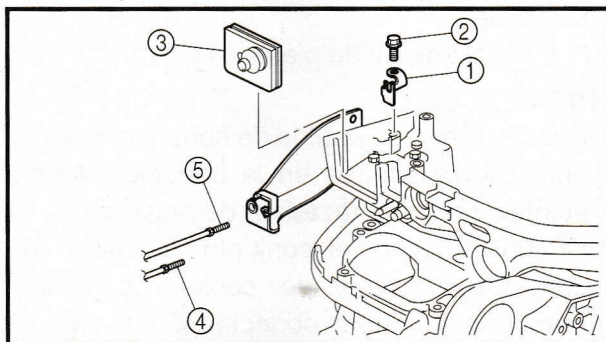


7. Prepar:

- Socket cord assembly ①

**TIP:**

Making sure not to damage the leads, cut away 160 mm (6.3 in) of the rubber sheath ② in order to connect the connectors.



## 10. Install:

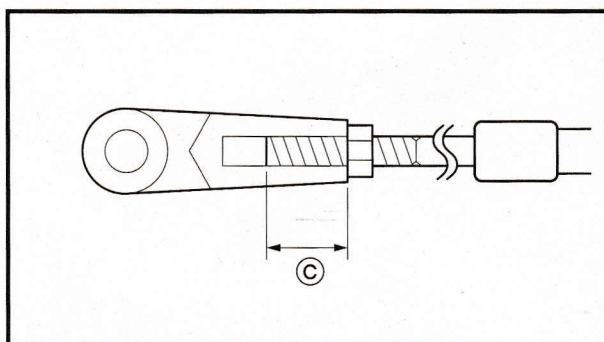
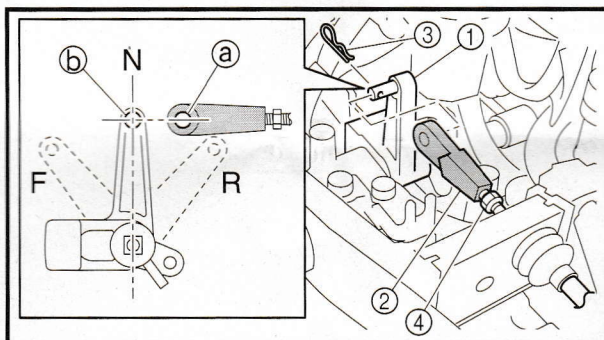
- Cable guide ①
- Bolt ②
- Grommet ③
- Shift cable ④
- Throttle cable ⑤

**Bolt:**

**10.0 N • m (1.02 kgf • m, 7.4 ft • lb)**

**TIP:**

- The hole in the bottom cowling for the bolt ② is not threaded, therefore, to ensure that the hole is threaded properly, be sure to keep the bolt upright when tightening it.
- Install the throttle cable ⑤ to cable guide ①.



## 11. Adjust:

- Shift cable joint position

**Adjustment procedure:**

- Set the remote control lever and shift rod lever joint ① to the neutral position.
- Install the cable joint ② onto the shift cable, and then adjust the position of the joint until its hole ③ is aligned with the set pin ④ on the shift rod lever joint ①.

**⚠ WARNING**

**The shift cable joint must be screwed in a minimum of 8.0 mm (0.31 in) ⑤.**

- Connect the shift cable joint ②, install the clip ③, and then tighten the locknut ④.
- Check that the gear shift operates smoothly when the remote control lever is shifted from the neutral position to forward or reverse.